



Desktop Printers

DT200/DT200i series

Small in size but packed with powerful features and options!

The DT200 series is an ingenious design that brings several functions into one platform. It supports 203dpi or 300dpi printing resolution and offers an optional 2.4-inch color display for ease of use. A full line of optional accessories is available and the DT200L supports linerless media printing. All your needs can be satisfied with this series.



Various standard interfaces facilitate integration into several environments.



Enhanced label feeding mechanism



Color TFT LCD and operation panel for easy and intuitive operation.



Innovative calibration button makes label calibration simple and fast



DT200/DT200i Series Printer Specification

Model		DT200	DT230	DT200i	DT230i
Print Method		Direct Thermal			
Resolution		203 dpi (8 dots/mm)	300 dpi (12 dots/mm)	203 dpi (8 dots/mm)	300 dpi (12 dots/mm)
Print Speed		7 IPS (178 mm/s)	5 IPS (127 mm/s)	7 IPS (178 mm/s)	5 IPS (127 mm/s)
Print Width		2.12" (54 mm)	2.24" (57 mm)	2.12" (54 mm)	2.24" (57 mm)
Print Length		Min. 0.16" (4 mm)**; Max. 68" (1727 mm)	Min. 0.16" (4 mm)** ; Max. 30"(762 mm)	Min. 0.16" (4 mm)**; Max. 68" (1727 mm)	Min. 0.16" (4 mm)** ; Max. 30"(762 mm)
Processor		32 Bit RISC CPU			
Memory	Flash	128 MB Flash (60 MB for user storage)			
	SDRAM	32 MB			
Sensor Type		Adjustable reflective sensor (full range). Fixed transmissive sensor. Central aligned.			
Media	Types	Continuous form, gap labels, black mark sensing, and punched hole; label length set by auto sensing or programming			
	Width	Min. 0.6" (15 mm) – Max. 2.36" (60 mm)			
	Thickness	0.003" (0.08 mm) Min. - 0.008" (0.20 mm) Max.			
	Label Roll Diameter Core Diameter	Max. 5" (127 mm) 1" (25.4 mm), 1.5" (38.1 mm)			
Printer Language		EZPL, GEPL, GZPL, GDPL auto switch			
Software	Label Design Software	GoLabel (for EZPL only)			
	Driver SDK	Vista, Windows 7, Windows 8 & 8.1, Windows 10, Windows Server 2008 R2, 2012, 2012 R2, 2016, 2019, MAC, Linux Win CE, .NET, Windows Vista, Windows 7, Windows 8 & 8.1, Windows 10, Android, Mac, iOS			
Resident Fonts	Bitmap Fonts	6, 8, 10, 12, 14, 18, 24, 30, 16X26 and OCR A&B Bitmap fonts 0°, 90°, 180°, 270° rotatable, single characters 0°, 90°, 180°, 270° rotatable Bitmap fonts 8 times expandable in horizontal and vertical directions			
	TTF Fonts	TTF Fonts (Bold / Italic / Underline). 0°,90°, 180°, 270° rotatable			
Download Fonts	Bitmap Fonts	0°, 90°, 180°, 270° rotatable, single characters 0°, 90°, 180°, 270° rotatable			
	Asian Fonts	6x16, 24x24. Traditional Chinese (BIG-5), Simplified Chinese(GB2312), Japanese (S-JIS), Korean (KS-X1001) 0°, 90°, 180°, 270° rotatable and 8 times expandable in horizontal and vertical directions			
Barcodes	1-D Bar codes	TTF Fonts (Bold / Italic / Underline). 0°,90°, 180°, 270° rotatable China Postal Code, Codabar, Code 11, Code 32,Code 39, Code 93, Code 128 (subset A, B, C), EAN-8/EAN-13 (with 2 & 5 digits extension), EAN 128, FIM, German Post Code, GS1 DataBar, HIBC, Industrial 2 of 5 , Interleaved 2-of-5 (I 2 of 5) , Interleaved 2-of-5 with Shipping Bearer Bars, ISBT-128, ITF 14, Japanese Postnet, Logmars, MSI, Postnet, Plessey, Planet 11 & 13 digit, RPS 128, Standard 2 of 5, Telepen, Matrix 2 of 5, UPC-A/UPC-E (with 2 or 5 digit extension), UCC/EAN-128 K-Mart and Random Weight			
	2-D Bar codes	Aztec code, Code 49,Codablock F , Datamatrix code, MaxiCode, Micro PDF417, Micro QR code, PDF417,QR code, TLC 39, GS1 Composite			
Code Pages		Codepage 437, 737,850, 851, 852, 855, 857, 860, 861, 862, 863, 865, 866, 869 Windows 1250, 1251, 1252, 1253, 1254, 1255, 1257 Unicode UTF8 · UTF16BE · UTF16LE			
Graphics		Resident graphic file types are BMP and PCX, other graphic formats are downloadable from the software			
Interfaces		USB 2.0		USB 2.0	
		Serial port: RS-232 (DB-9) Ethernet 10/100 Mbps		Serial port: RS-232 (DB-9) Ethernet 10/100 Mbps USB Host (A-Type)	
Control Panel		Two LEDs : Ready, Status		Color TFT LCD with navigation button	
		Power on / off button		Power on/off button	
		Calibration button		Calibration button	
		Control key : FEED		Control key: FEED	
Real Time Clock		Option		Standard	
Power		Switching power 100-240VAC, 50-60Hz input			
Environment	Operation Temperature	41°F to 104°F (5°C to 40°C)			
	Storage Temperature	-4°F to 122°F (-20°C to 50°C)			
Humidity	Operation	30-85%, non-condensing			
	Storage	10-90%, non-condensing			
Agency Approvals		CE (EMC) · FCC Class B · CB · UL · cUL · CCC · BSMI			
Dimension	Length	207 mm (8.15")			
	Height	171 mm (6.73")			
	Width	112 mm (4.41")			
Weight		1.05 kg(2.31lb), exclusive consumables			
Options		Cutter (Dealer Install)		Cutter (Dealer Install)	
		Label Dispenser (Dealer Install)		Label Dispenser (Dealer Install)	
		External label unwind Stand		External label unwind Stand	
		External label rewinder		External label rewinder	
		Bluetooth(Dealer Install)		Bluetooth(Dealer Install)	
		Wireless LAN (IEEE 802.11 b/g/n) (Dealer Install)		Wireless LAN (IEEE 802.11 b/g/n) (Dealer Install)	
		Real Time Clock (RTC)			

*Specifications are subject to change without notice. All company and/or product names are trademarks and/or registered trademarks of their respective owners.

**Minimum print height and maximum print speed specification compliance can be dependent on non-standard material variables such as label type,thickness, spacing, liner construction, etc. GoDEX is pleased to test non-standard materials for minimum print height, and maximum print speed capability.

Applications

Applications for Labels & Barcodes

DT200/DT200i series is an ultra-compact 2-inch wide label printer, ideal for limited work space options.



Retail

Price tags, content labels, courier tracking label, receipts for registered mails, bills of landing (B / L), postage labels, etc.

Health Care

Tube tags, pharmaceutical labels, patient identification, medical records and laboratory specimen tags.

Travel & Leisure

By barcoding your tickets, you can track ticket sales and admittance, as well as improve security at your event.

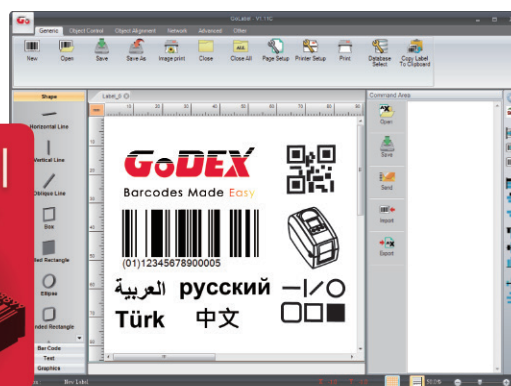
GoDEX

LABEL DESIGN SOFTWARE

GoLabel Software / User Friendly

GoLabel is based on a WYSIWYG (what you see is what you get) user interface, makes everything so easy for you to create and print barcode labels. GoLabel is the first-choice label design software that you can't miss it!

Go visit www.godexintl.com and download GoLabel to experience it!



GoDEX
www.godexintl.com

Godex International
(Headquarters)
Telephone : +886 2 2225 8580
Contact us : infoGT@godexintl.com

Godex Americas
Telephone : +1 805 987 5100
Contact us : infoGA@godexintl.com

Godex China
Telephone : +86 21 56651313
Contact us : infoGC@godexintl.com

Godex Europe
Telephone : +49 2195 59599 0
Contact us : infoGE@godexintl.com