

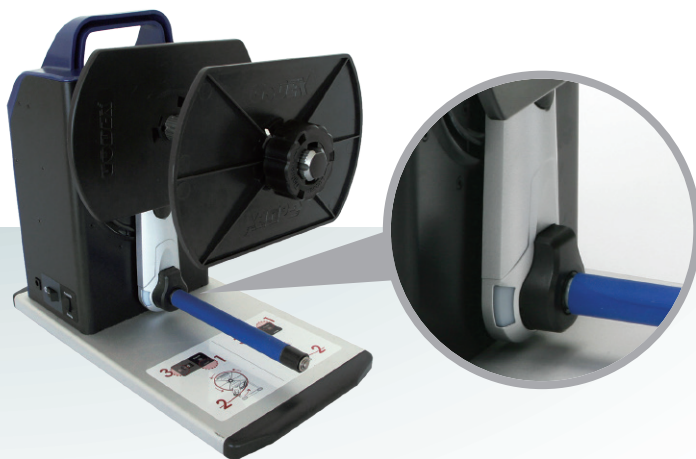
Label Rewinder Family

T10C / T20C / T30C

Re-/ Unwinder for Colour Printers



VR(Speed Adjustment)



Colored LED indicator provides rewinder operation status

T10C / T20C / T30C

Re-/ Unwinder

Model		T10C	T20C	T30C
Paper Width		4.72" (Max.)	7" (Max.)	8.46"
Rewind Speed		6 IPS (Max.)		
Label Roll		8" (Max.)	6" (Max.)	6.3" /Max.)
Core Roll		Coreless, 1" (25.2~25.6mm), 1.5"x2 (37.4~38.0mm&40~40.6mm), 3" (76~76.6mm)		
Label Roll Weight		5 Kg		5,5 Kg (12 lb)
Rewinding		Label Inside / Outside		
Switches		Rewind		
Motor		Hybrid Motor		
Power		100-240V AC 24W, 24V Adapter		
Environment	Operation Temperature	5°C bis 40°C (41°F bis 104°F)		
	Storage Temperature	-20°C bis 60° (-4°F bis 122°F)		
Humidity		10-85%, (non-condensing RH)		
Agency Approvals		CE, FCC Class A		
Size (H*W*D)		303mm*180mm*349mm	303mm*180mm*394mm	303 mm*230mm*349 mm
Weight		5 Kg (11lb)		5,5 Kg (12lb)

* Specifications are subject to change without notice. All company and/or product names are trademarks and/or registered trademarks of their respective owners.