



THE WORLD'S LEADING MANUFACTURER OF LABEL DISPENSERS, REWINDERS, UNWINDERS & COUNTING SOLUTIONS

UNPOWERED UNWINDERS

UCAT-S

UCAT-S-MINI

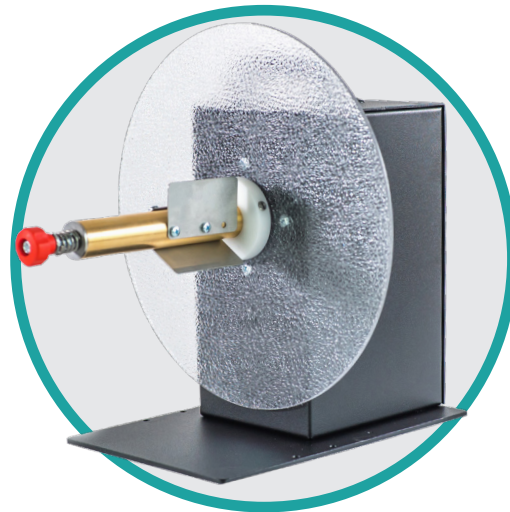
[labelmate.com](http://labelmate.com)

# Unpowered Label Unwinders

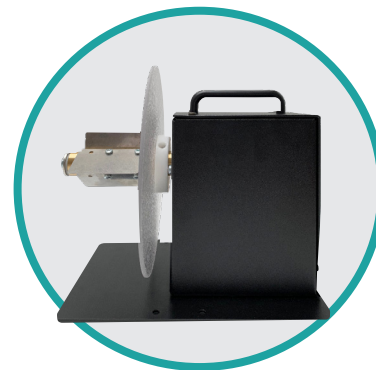
## UCAT-S-MINI & UCAT-S

Label unwinders provide a convenient way to **manage your supply roll of labels** as it feeds into a printer. You can use larger rolls of labels to minimize your unit label cost. The supply roll of labels does not have to be refreshed as often, **saving time and adding convenience**. External label rolls are always visible, making it easy to monitor the status of your label supply.

- ✓ Small footprint to fit on any desk
- ✓ Easy setup: attach the labels to the take-up core and ready to start
- ✓ The UCAT-S-MINI features a wearless brake to stop the roll at the end of job
- ✓ The UCAT-S Features adjustable speed/braking to align with printer
- ✓ Large capacity for roll diameters up to 300mm



UCAT-S



UCAT-S-MINI

### FEATURES UCAT-S-MINI

- Maximum Label Roll Weight: 4.5 KG
- Maximum Label Width: 125 mm
- Maximum Roll Diameter: 220 mm
- Maximum Speed: 50 CM/SEC at the beginning of a 76 mm core roll
- Dimensions : W x D x H : 220 x 305 x 195

### FEATURES UCAT-S

- Maximum Label Roll Weight: 8 KG
- Maximum Label Width: 155 mm
- Maximum Roll Diameter: 300 mm
- Maximum Speed: same as printer
- Dimensions : W x D x H : 300 x 365 x 320mm

## UNPOWERED UNWINDERS

P/N	MODEL	DESCRIPTION	MAX LABEL WIDTH (mm)	MAX ROLL DIAM (mm)	MAX
LMU014	UCAT-S-MINI	Unwinder with mechanical brake. Standard for 76mm cores (38/40/44/70/100mm available)	125	220	4.5 KG
LMU001	UCAT-S	Unwinder with Adjustable Brake. Standard for 76mm cores (38/40/44/50/70/100mm available)	155	300	8 KG

## OPTIONS

P/N	MODEL	DESCRIPTION
LMX579		UNIVERSAL- ALIGNMENT PLATE for any desktop Thermal Transfer and Inkjet color printer

## VANES

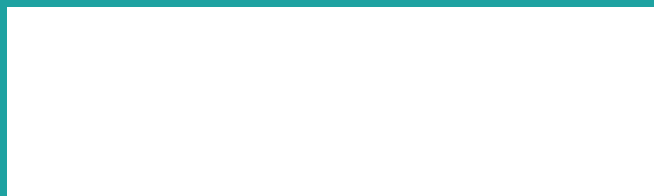
P/N	MODEL	DESCRIPTION
LMX493	VANES 38	Set of 3 vanes (fins) for 38 mm cores.
LMX494	VANES 40	Set of 3 vanes (fins) for 40 mm cores.
LMX495	VANES 44	Set of 3 vanes (fins) for 44 mm cores.
LMX496	VANES 50	Set of 3 vanes (fins) for 50 mm cores.
LMX497	VANES 70	Set of 3 vanes (fins) for 70 mm cores.
LMX498	VANES 76	Set of 3 vanes (fins) for 76 mm cores.
LMX499	VANES 100	Set of 3 vanes (fins) for 100 mm cores.

## GENERAL

- Power Supply: 100-240V- 50Hz, Output 15VDC-4,33A
- Limited Warranty of 5 Years, 1 Year on the Power Supply



Your local partner:



**+32 2 375 69 60**

**[brussels@labelmate.com](mailto:brussels@labelmate.com)**

Chaussée de Ruisbroek 290  
1620 Drogenbos (Belgium)

**[www.labelmate.com](http://www.labelmate.com)**